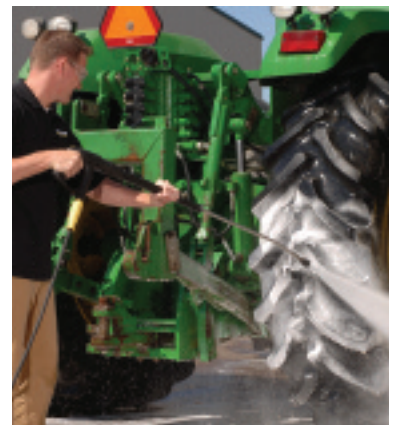
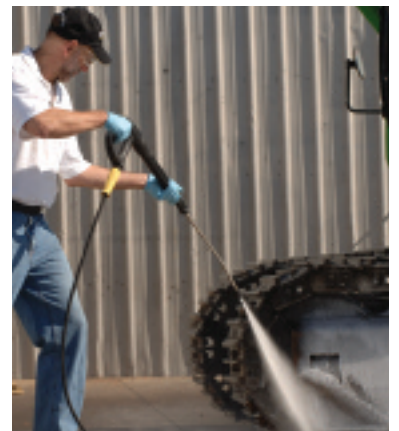


CLASSIC SERIES



Rugged, Skid-Mounted, Industrial-Duty, Gasoline-Powered Hot Water Pressure Washer



Rugged, Fuel-Efficient Skid Pressure Washer with Downdraft Burner and Industrial-Duty, Belt-Drive Crankcase-Style Pump

These durable, skid-mounted, Classic Series hot water pressure washers are loaded with standard features and are built to deliver cleaning power to the most remote locations. Featuring reliable gasoline-powered Honda or Vanguard engines, this line of hardworking models uses the rugged, belt-drive, Kärcher KT Series crankcase pumps. All units come with Kärcher's anti-scale system, steam stage, and a burner system that delivers up to 92% fuel efficiency. Each skid model is ETL certified to the rigid UL-1776 and CSA 22.2 safety standards and has a variety of redundant safety features, such as temperature control, low-water protection and rupture disk.

- **Super-Efficient Downdraft Burner**
- **Reliable Belt-Drive Crankcase Pump with 7-Yr Warranty**
- **Fuel-Control System Eliminates Temperature Fluctuations**

TYPICAL APPLICATIONS

- Heavy Equipment
- Industrial
- Construction
- Fleets
- Waste Haulers
- Agriculture
- Tankers
- Engines

WHY KÄRCHER



Kärcher is the most trusted name in pressure washers—a fact confirmed when Kärcher was the only brand

selected to clean the famous Mount Rushmore National Monument in 2005.

Founder Alfred Kärcher invented hot water pressure washing in 1950. Today, as the world's largest manufacturer of pressure washers, Kärcher is the recognized innovative leader in the industry with nearly 300 patents.



Dimensions:
51"L x 33"W x 43"H



- Kärcher's 92% efficient **top-fired burner** delivers more heat from less fuel for the lowest operating costs in the industry
- **Detergent metering valve** allows for infinitely variable application of soap while washing in high-pressure mode
- Industrial-duty, tri-plunger, oil-bath, belt-drive **Kärcher KT pump** with 7-year warranty, brass pump head, and Tru-Trak belt adjustments; operates at a low RPM for low-maintenance operation and long life
- 50' Kärcher **high-pressure steam hose** rated for 311°F connects to the gun with an integrated swivel connection
- **Infinitely variable** operating pressure, water volume, temperature control, and detergent metering
- Built-in variable **steam valve** creates steam spray of up to 285°F
- Heavy-gauge 1/4" **steel frame** with powder coat finish for all-weather protection; with vibration isolators and forklift guides
- Reliable gas-powered **engines** with electric start
- Proprietary **scale inhibiting system** prevents build-up of mineral deposits inside the coil
- Safety **relief valve** protects pump from overheating and excessive pressure build up
- Rust-free 11 gal. polyethylene diesel and gasoline **tanks** for hours of uninterrupted operation
- **Warning lights** monitor fuel and scale inhibitor levels; **low-fuel shut-off** protects fuel pump
- Unsurpassed Kärcher **safety features** include pressure switches, rupture disk, low-water and low-fuel protection that shuts down burner when incoming water and fuel are insufficient or interrupted
- Ergonomically designed soft-grip Easy Press trigger **gun** minimizes operator fatigue
- Insulated Kärcher pivoting spray **wand** with a unique 25° **Power Nozzle** that delivers 40% more cleaning power due to even-impact spray pattern
- **ETL certified** to rigid UL-1776 and CSA 22.2 safety standards

Model	Order No.	GPM	PSI	Engine	HP	Start	Pump	Ship Wt
HDS 4.0/32 Pe Cage	1.575-615.0	4.0	3200	Honda	13	Electric	Kärcher KT	675 lbs
HDS 5.0/32 Pe Cage	1.575-616.0	5.0	3200	Vanguard	16	Electric	Kärcher KT	720 lbs
HDS 5.5/35 Pe Cage	1.575-617.0	5.5	3500	Honda	20	Electric	Kärcher KT	741 lbs

YOUR AUTHORIZED KÄRCHER DEALER:



Kärcher Commercial Pressure Washers
www.karchercommercial.com
info@karchercommercial.com
888-805-9852 • Fax 800-248-8409